

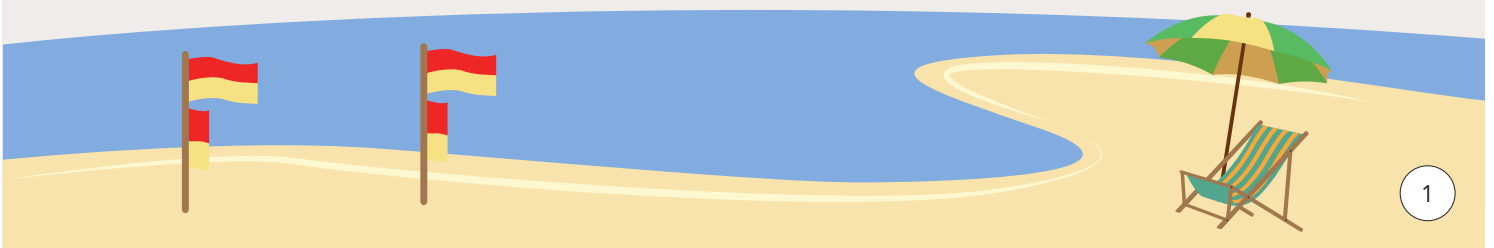
# Maths

## Maps Galore

Time recommended: 1 hour

Year 3 and 4

Strand:	Measurement and Geometry
Descriptor:	Location and transformation
<ul style="list-style-type: none"><li>• Create and interpret simple grid maps to show position and pathways (ACMMG065)</li><li>• Use simple scales, legends and directions to interpret information contained in basic maps (ACMMG090)</li></ul>	



Name: \_\_\_\_\_



# Maps galore

Use the following maps to answer a range of questions about the rescue helicopters.

## TASK ONE:

For this task use Map 1.

If each square represents 10km distance, roughly how far is it from Darwin CBD to Casuarina Coastal Reserve?

\_\_\_\_\_ km North

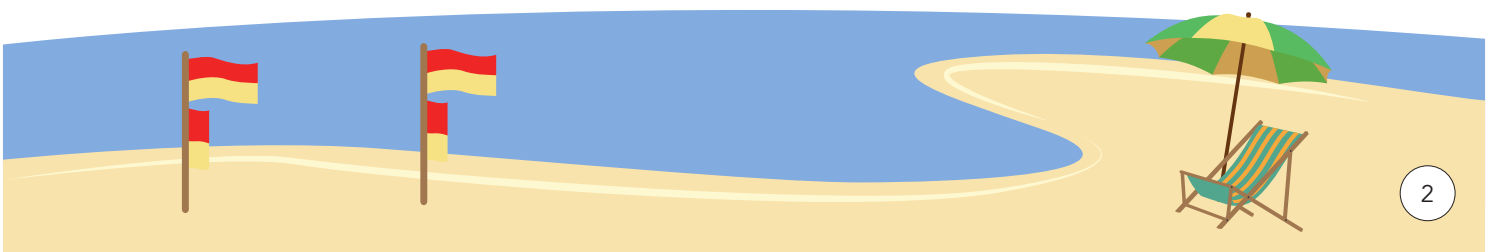
\_\_\_\_\_ km East

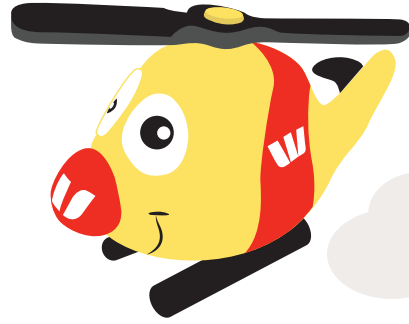
After attending to an emergency in square location F1, the rescue boat drives 40km West and 30km South before heading to the shore. Which square does the rescue boat reach?

\_\_\_\_\_

What landmarks are close to that location?

\_\_\_\_\_





**TASK TWO:**

For this task use Map 2.

If you had to direct the pilot to fly from Mount Faulkner Conservation Area to Mount Dromedary Forest Reserve, what instructions would you provide the pilot? Each grid square represents 5km.

---

Once the helicopter picks up the lost hiker at Mount Dromedary Forest Reserve, they have to fly them back to Hobart. What is the total distance travelled East as well as total distance travelled South?

---

**TASK THREE:**

For this task use Map 3.

Each square represents 8km distance. Write down the directions if the helicopter was to start at the base in Gold Coast (E5), travel first to the shopping centre, then to Palm Meadows Golf Course, then onto the Royal Pines Resort and ends up at Griffith University.

---

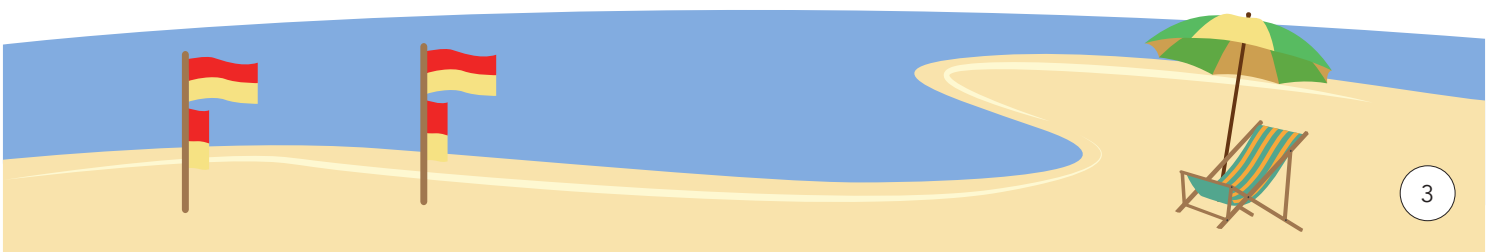
---

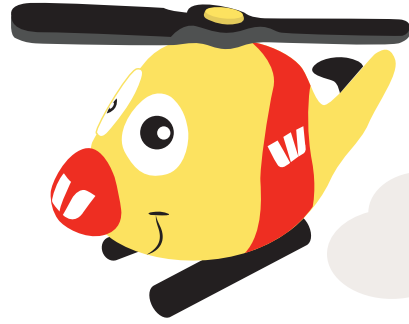
---

**TASK FOUR:**

Using the grid provided, create a map of your classroom. Think about including the following areas:

- Where the teacher stands \_\_\_\_\_

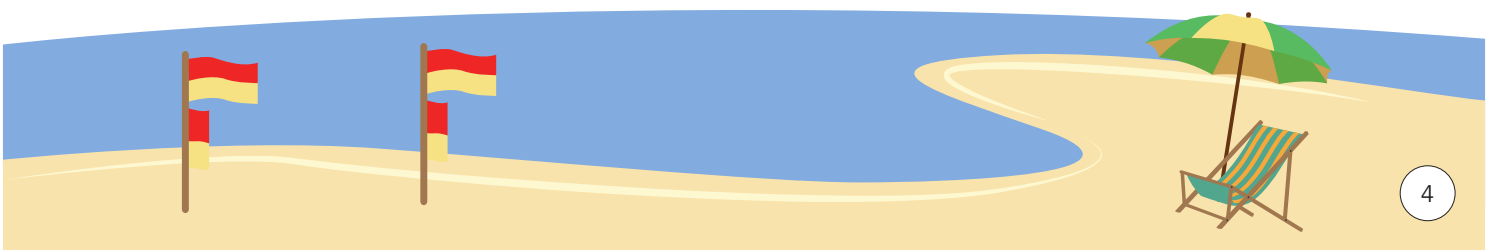
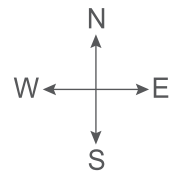




**TASK FOUR CONTINUED:**

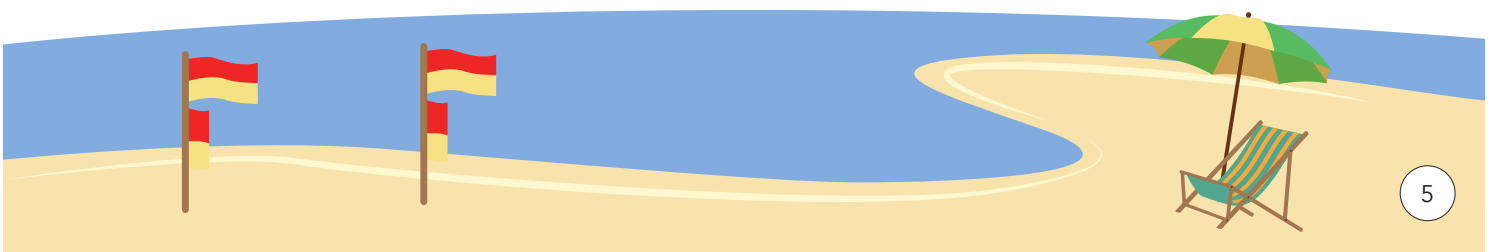
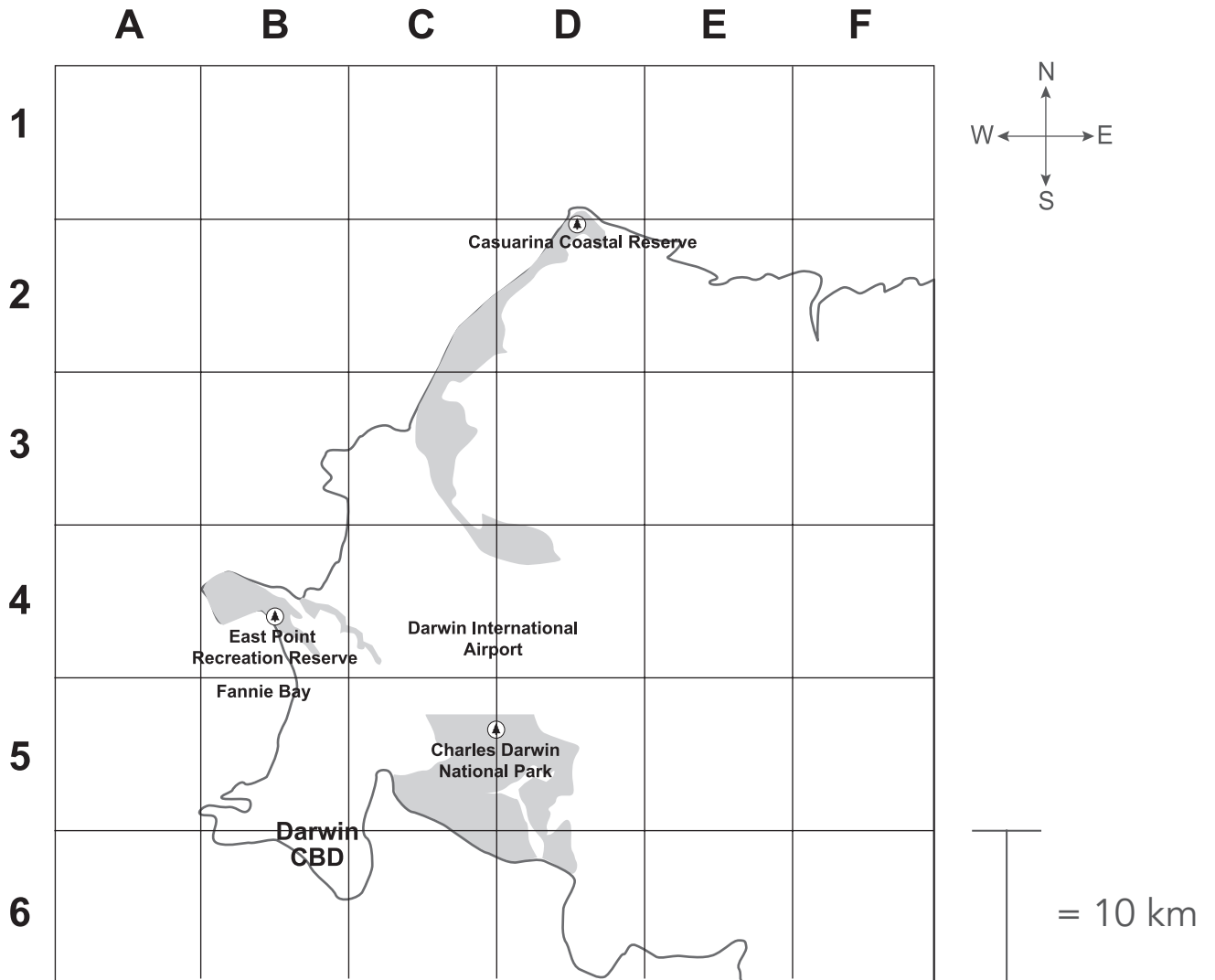
- Where you sit \_\_\_\_\_
- Where the door is \_\_\_\_\_

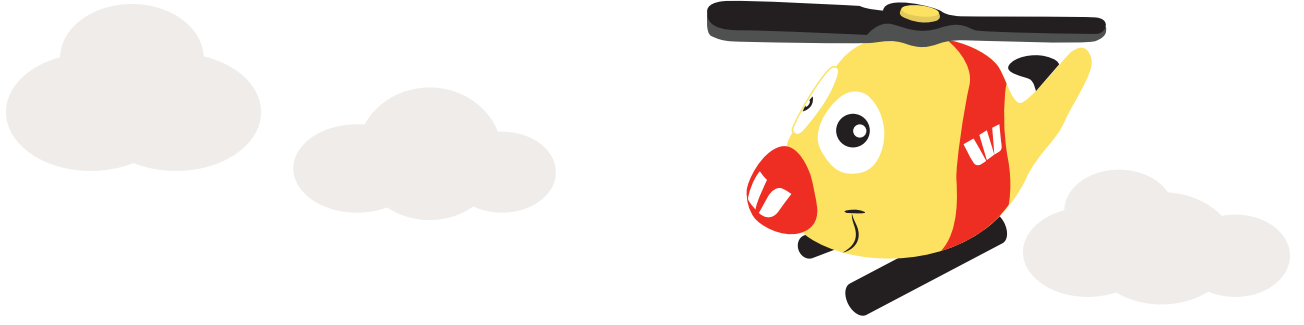
	A	B	C	D	E	F
1						
2						
3						
4						
5						
6						



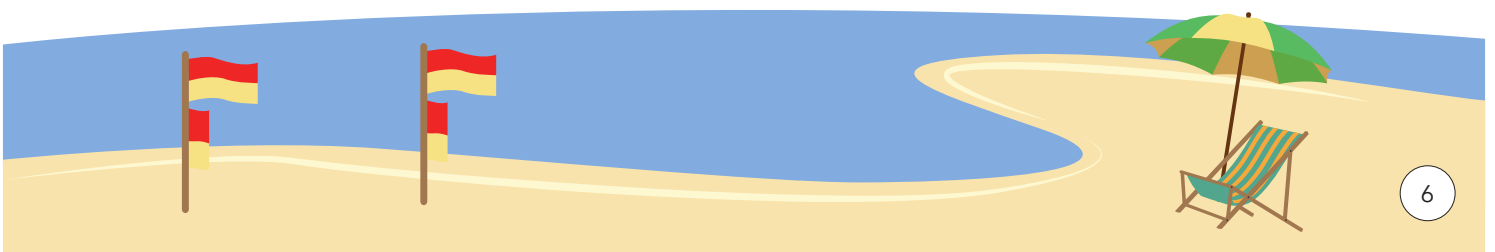
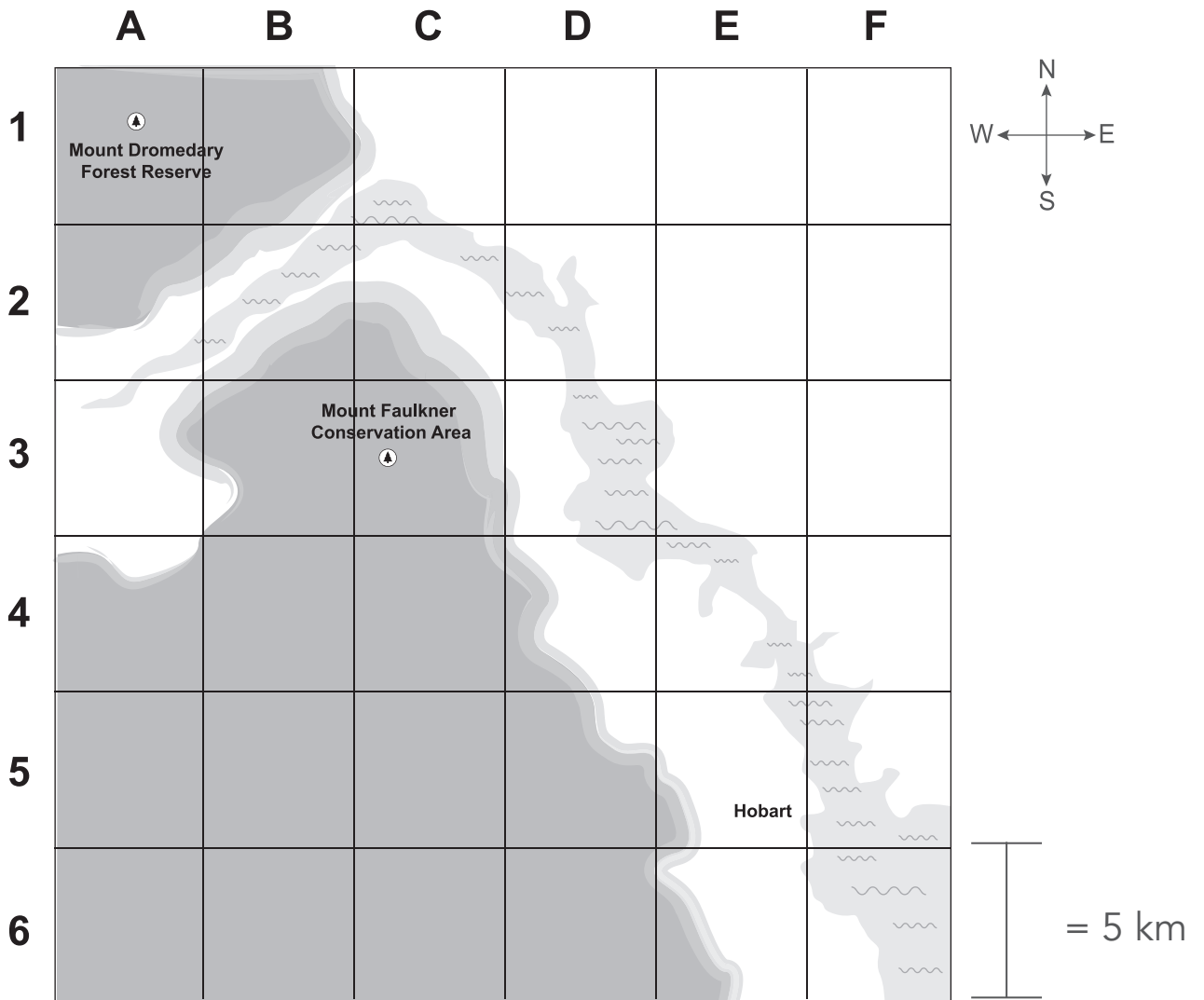


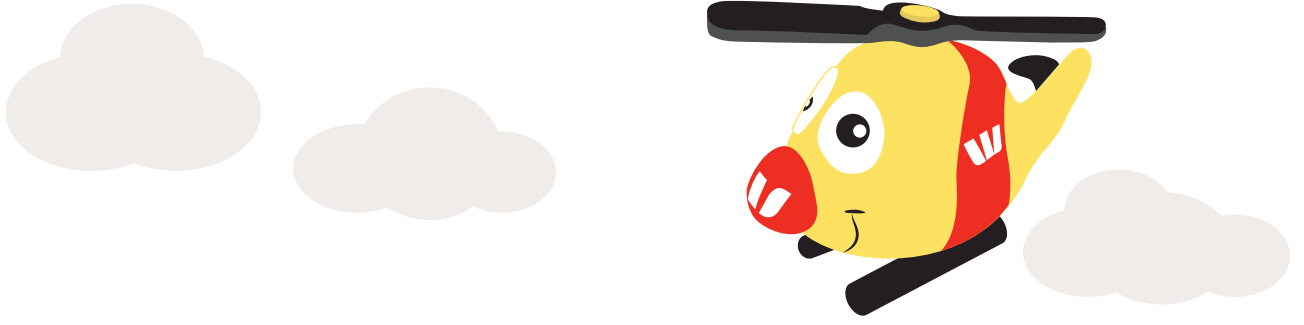
Map 1 - Darwin





### Map 2 - Hobart





Map 3 - Gold Coast

