



Science

Different environments

Time recommended: 1 hour
Year 1 and 2

Strand:	Science as a Human Endeavour
Descriptor:	Nature and development of science
Science involves asking questions about, and describing changes in, objects and events (ACSHE021/ ACSHE034)	
Strand:	Science Inquiry Skills
Descriptor:	Evaluating
Compare observations with those of others (AC SIS213/ AC SIS214)	
Descriptor:	Questioning and predicting
Respond to and pose questions, and make predictions about familiar objects and events (AC SIS024/ AC SIS037)	



Name: _____



Different environments

After watching the rescue episodes, discuss some of the different environments and how they change.

TASK ONE:

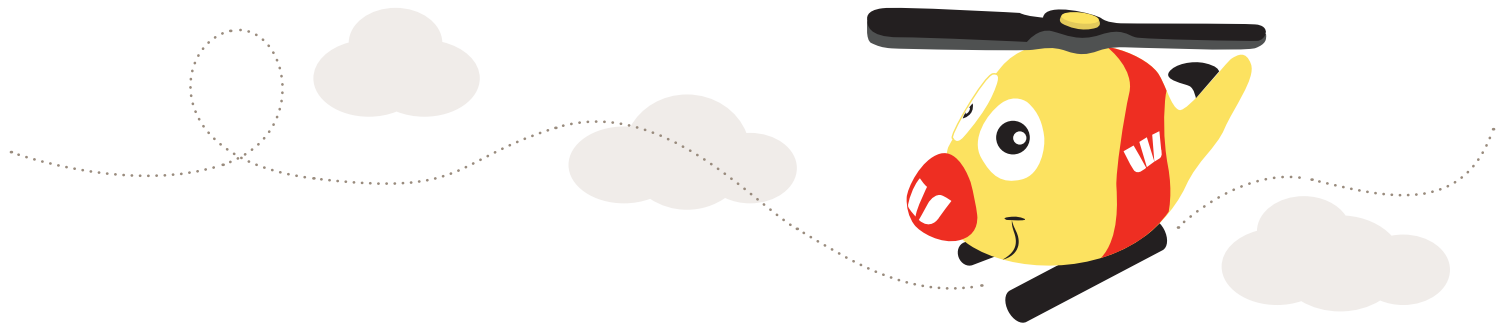
The Rescue Helicopters are called to a wide range of emergencies in a lot of different environments. From the bush to the beach and everything in between, Australia has a variety of landscapes and the Westpac Lifesaver Rescue Helicopter Service have to be ready to help in any situation.

In each of the boxes below, draw a picture that shows one of these environments:

- Beach/coast
- Inland forests
- Farmland
- Lake

Once you have completed this task, compare your pictures with your classmates and discuss the differences.





TASK TWO:

For each of the below environments, discuss with your classmates the kinds of situations in which people might require the help of the rescue helicopter.

- Beach/coast _____

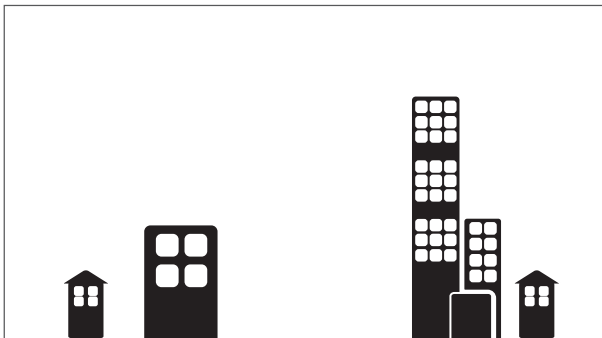
- Inland forests _____

- Farmland _____

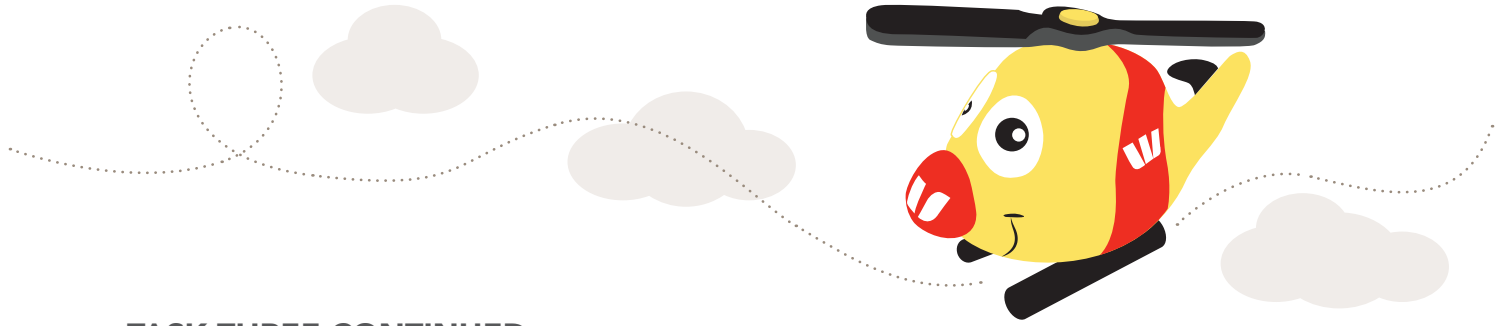
- Lake _____

TASK THREE:

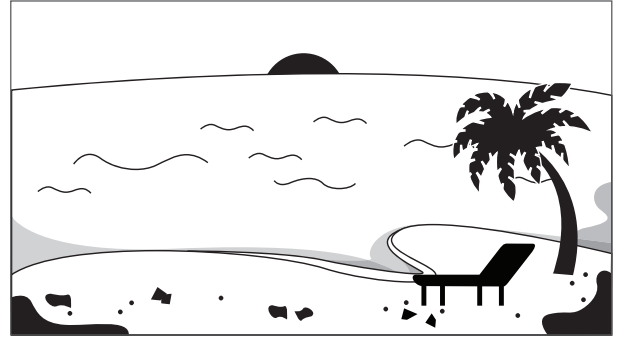
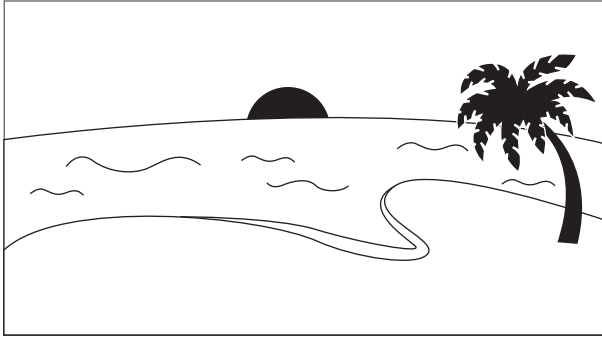
Looking at the pictures below, discuss how each of the environments has changed. Visually, how have they changed? Describe why they might have changed.



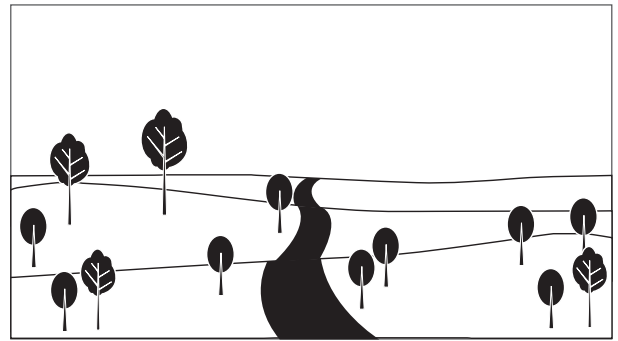
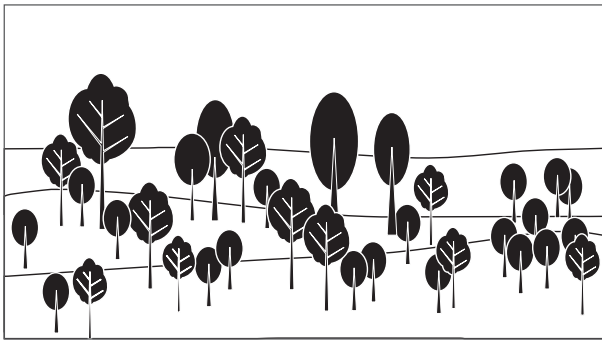




TASK THREE CONTINUED:



What will happen if the sea levels rise?



What will happen if all the trees in the forest are cut down?

