



**SAFER CHILDREN, SAFER COMMUNITIES**

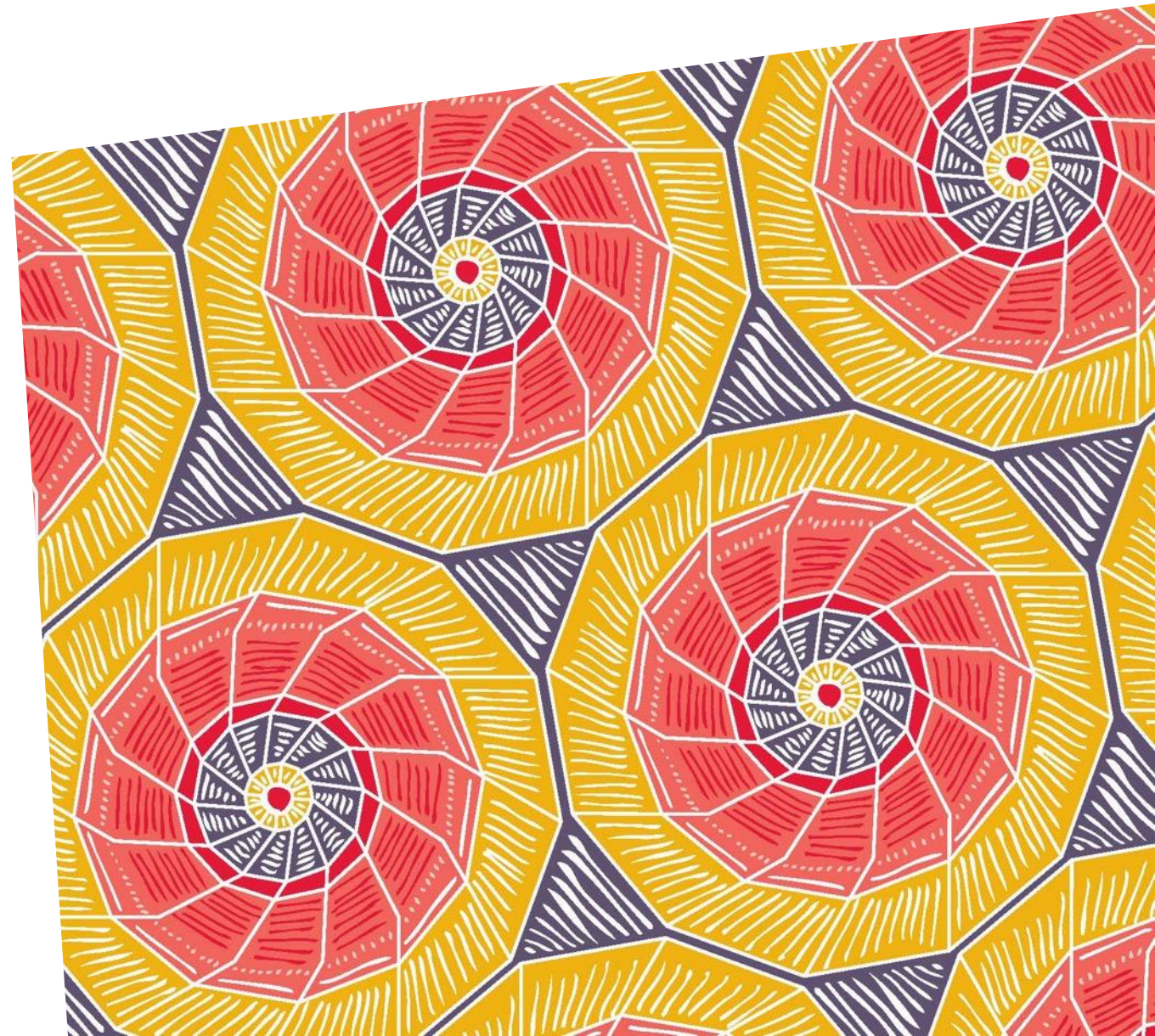
# 2025 UPDATE

APRIL 2026

# ACKNOWLEDGEMENT OF INDIGENOUS PEOPLES

Westpac acknowledges the First Peoples of Australia. We recognise their ongoing role as Traditional Owners of the land and waters of this country and we pay our respects to Elders, past and present. We extend our respect to Westpac's Aboriginal and Torres Strait Islander employees, partners and stakeholders, and to the Indigenous Peoples in the other locations in which we operate.

We also acknowledge the Indigenous Peoples in Aotearoa (New Zealand), referred to as tangata whenua, and the unique relationship they share with all New Zealanders under Te Tiriti o Waitangi.



# YEAR IN REVIEW

## CUMULATIVE PROGRESS OF WESTPAC AND OUR PARTNERS (FY20-FY25)<sup>1</sup>

### CATALYSE CHANGE

**\$80+ million** committed by Westpac since 2020, supporting **50+** organisations across Australia and Asia, with **all funds now fully allocated**.

### HELP PROTECT CHILDREN

**860,000+** children, young people & adults directly and indirectly reached through funding provided to our partners, including **685,000+** in Australia and **175,000+** in Asia.<sup>3</sup>

### RAISE AWARENESS

**10** corporate members in the Coalition and **98** businesses engaged through the 'On Us: Australian Business Coalition for Safeguarding Children' (On Us Coalition) with Westpac funding.

### ACCELERATE UNITY OF ACTION

**47 data collaboration projects** completed to catalyse data and technology solutions to help detect, report and prevent the child sexual exploitation and abuse (CSEA).

## FY25<sup>2</sup>

- **\$3.2 million** committed in funding to child safeguarding organisations. This marks the 6th year of the Safer Children, Safer Communities (SCSC) Program.
- Westpac New Zealand and Netsafe piloted sessions focused on **fraud and scam education to teenagers**.
- **Continued focus on child safeguarding** through our Safety by Design work and focus on financial crime risks across the bank.

- **133,000+** children, young people and adults directly and indirectly reached through programs delivered by partners supported by our funding in Australia and Asia.<sup>4</sup>
- This includes:
  - **19,000+** children, young people and adults reached in Australia and **114,000+** in Asia.
  - **228** victim rescues supported by International Justice Mission in the Philippines.
  - **247** families who received cash grants in the Philippines.
  - **41,000+** children and adults in the Philippines and Thailand who participated in education programs supported by Westpac funding to Save the Children Australia.

- **5 new** corporate members joined the Coalition and **25** businesses<sup>5</sup> engaged through the On Us Coalition, with support from Westpac funding.
- **Arinex, BluBiz, Cirka, OBE Organic** and the **Rugby League Players Association** joined the On Us Coalition as new members, reflecting their shared commitment to creating safer environments for children and young people.

- **9 data collaboration projects** completed and **6 new projects** initiated to help prevent CSEA, facilitated by ICMEC Australia and supported by Westpac funding.
- **35 organisations** collaborated with ICMEC Australia to **share insights and develop resources to fight CSEA**, across the finance sector, law enforcement and industry regulators.
- ICMEC Australia continued to convene the **SaferAI for Children Coalition**, bringing together **26** member organisations to advance action on child-safe Artificial Intelligence policy.
- ICMEC Australia delivered child exploitation awareness training to **297** Australian law enforcement personnel and **105** officers across Cambodia and Malaysia.

1. Data covers FY20–FY25 (1 Oct 2019–30 Sep 2025), unless stated otherwise. Based on unverified information provided by grant recipients; Westpac makes no representation as to accuracy, completeness or reliability.

2. Data covers FY25 (1 Oct 2024–30 Sep 2025), unless stated otherwise. Based on unverified information provided by grant recipients; Westpac makes no representation as to accuracy, completeness or reliability.

3. Reach includes children, young people and adults reached directly and indirectly, including partner-delivered training, education and capacity-building (online and in-person). FY24 data previously excluded for The Benevolent Society, increasing cumulative reach.

4. Reach includes children, young people and adults reached directly and indirectly, including partner-delivered training, education and capacity-building (online and in-person). FY25 reach includes some FY26 data from end-of-project acquittals.

5. Includes Australian businesses reached by the On Us Coalition through direct engagement, training and advocacy. Westpac SCSC funding ended December 2024; the Coalition now operates independently.

# BUILDING COMMUNITY-LED CHILD SAFETY AND WELLBEING IN REGIONAL AUSTRALIA

## The Benevolent Society

Since 2021, Westpac has partnered with The Benevolent Society through a five-year investment to support place-based initiatives that strengthen child protection and wellbeing. The partnership focuses on building community-led approaches that strengthen local capability, networks and confidence to respond to child safety concerns over the long term.

FY25 marked a period of consolidation, deepened community engagement and demonstrated impact across regional communities in Condobolin (NSW), Caboolture (QLD) and Port Augusta (SA).

- **417 children and young people reached**, all in rural and regional communities
- **126 Aboriginal and Torres Strait Islander children engaged**, reflecting culturally informed, community-driven approaches
- **224 adults reached**, primarily parents and carers supporting child wellbeing
- In **September 2025**, community partners were brought together at a two-day community gathering providing a platform to showcase local initiatives, share learning and strengthen collaboration with senior leaders and funders

Throughout the year, The Benevolent Society focused on strengthening delivery quality and long-term impact by supporting local organisations with targeted capacity-building, shared resources and tailored guidance aligned to child safety outcomes. FY25 also marked a shift toward sustainability and legacy. Partners progressed community-led transition and exit planning, strengthened local networks and embedded learning to help enable child safety and wellbeing outcomes continue beyond the life of the grant.

Looking ahead, as the partnership approaches its conclusion in 2026, FY25 outcomes show the value of sustained, place-based investment. By centering community leadership and capability, the partnership has helped contribute to safer, more supportive environments for children and families in those regional communities and helped create impact that will continue beyond the grant period.



### Galari Pathways – Strengthening Cultural Identity and Safer Communities

Some Aboriginal children and young people in regional NSW, including students attending North Forbes Primary School, had limited opportunities to engage with culture and Country through school or community-based activities.

With Safer Children, Safer Communities funding from Westpac, Galari Pathways delivered structured cultural programs across schools and community settings, including cultural dance, Wiradjuri language and storytelling.

The program supported Aboriginal students—including Aboriginal girls adopted outside their cultural communities—to learn about and celebrate their cultural identity in a safe, supportive environment, while engaging non-Indigenous students in shared cultural learning.

The program aimed to strengthen cultural understanding, peer connection and inclusion, contributing to positive relationships, student wellbeing and safer, more respectful school communities.

# CONNECT WITH US

[sustainability@westpac.com.au](mailto:sustainability@westpac.com.au)

[Safer Children, Safer Communities](#)