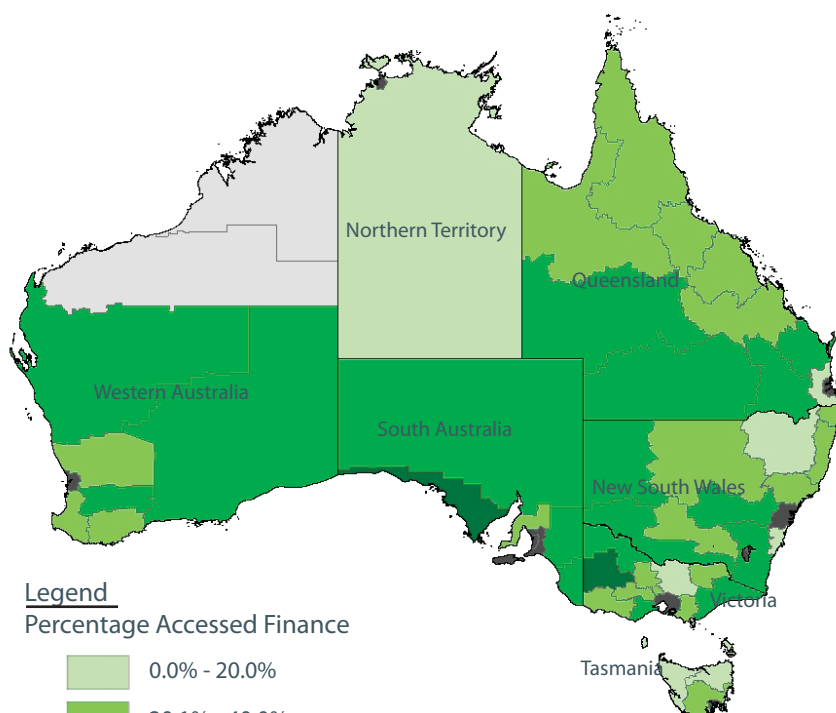
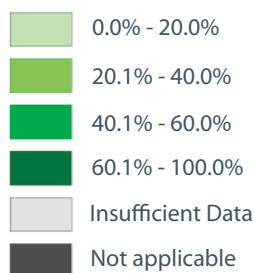


June Quarter 2007



Legend

Percentage Accessed Finance



As part of the Westpac / Charles Sturt University (CSU) Agribusiness Index, the respondents are asked two questions about finance.

Businesses are firstly asked if they have sought finance in the last 12 months and if they have, did they experience any difficulty obtaining the finance. This report summarises the results of these two questions nationally and for each state.

The adjacent map shows the distribution of respondents accessing finance across Australia by statistical division. The darker the colour the higher the concentration of respondents seeking finance.

The statistical divisions with the highest percentage of respondents seeking finance (dark green) were the Eyre division in South Australia and Wimmera division in Victoria.

The areas with the lowest concentration of respondents seeking finance (light green) were the Northern and Illawarra divisions of NSW, the Moreton division in Queensland, the Goulburn division in Victoria and the Northern and Mersey-Lyell divisions of Tasmania.

Overall in the June Quarter, 36% of agribusinesses reported seeking finance in the last 12 months compared to 24% in the March Quarter.

Eight percent of agribusiness nationally, experienced difficulty obtaining finance with 28% of respondents reporting no difficulty.

Businesses in South Australia and Queensland reported the highest percentage of respondents seeking finance whilst Tasmania reported the lowest percentage.

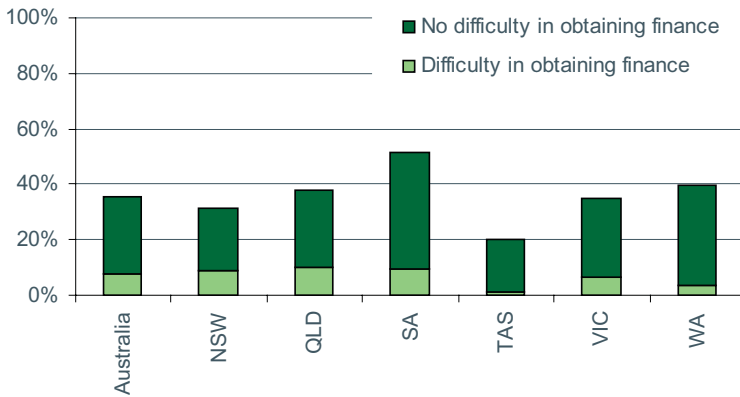
"It is hard to get finance"

Producer, Barwon, Victoria

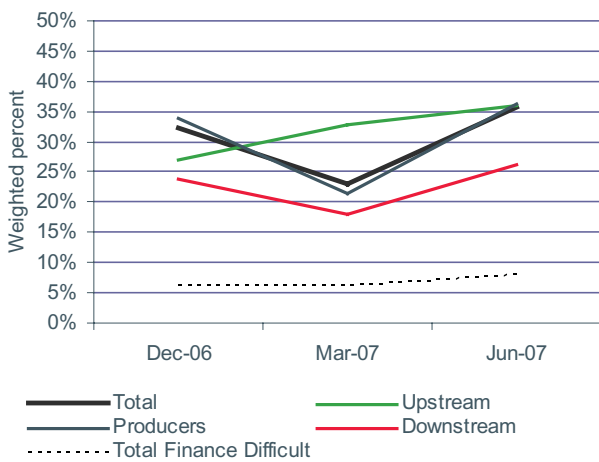
Finance

ACCESS FINANCE

Finance



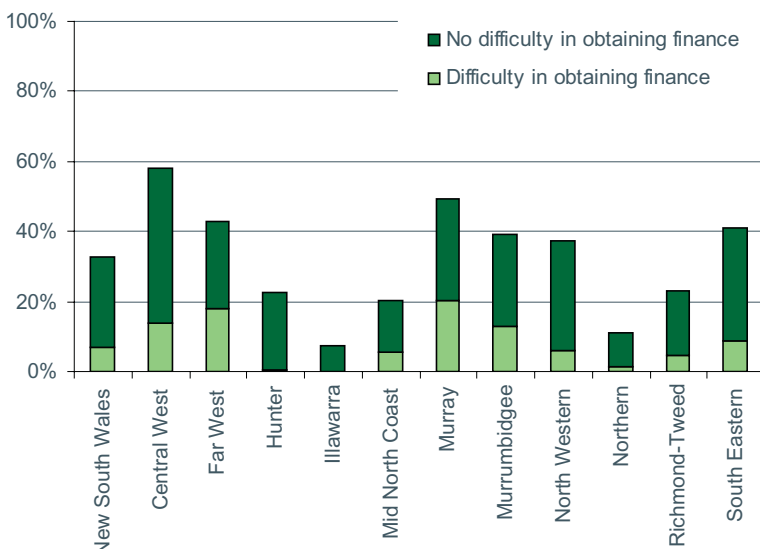
Percent of businesses seeking finance



The Westpac / Charles Sturt University (CSU) Agribusiness Index includes two questions on finance. Businesses are asked if they have sought finance in the last 12 months and if they have experienced any difficulty obtaining finance.

- In the June Quarter, 36% of agribusinesses Australia-wide reported seeking finance in the last 12 months compared to 24% in the March Quarter.
- Eight percent of agribusinesses experienced difficulty obtaining finance and 28% reported no difficulty.
- South Australia reported the highest percentage of businesses seeking finance whilst Tasmania reported the lowest percentage.
- Businesses in South Australia and Queensland reported the most difficulty obtaining finance, closely followed by those in New South Wales. Businesses in Tasmania reported the least difficulty obtaining finance.
- Upstream businesses and producers reported the highest percentage of businesses seeking finance and also the most difficulty in obtaining finance.

New South Wales

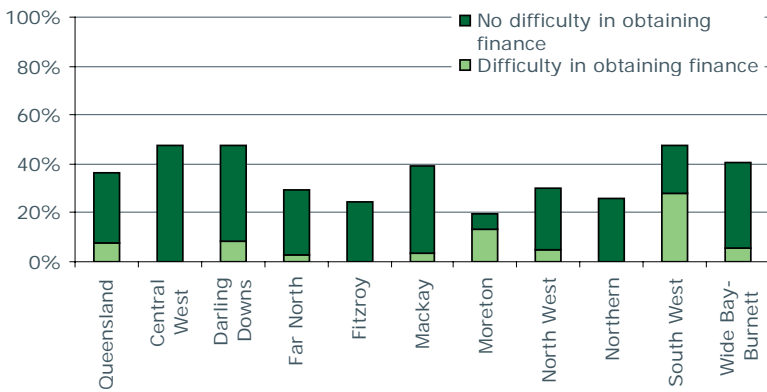


In New South Wales, 33% of agribusinesses sought finance in the last 12 months compared to 23% in the March Quarter.

- Seven percent of agribusinesses experienced difficulty obtaining finance and 26% reported no difficulty.
- Central West statistical division reported the highest percentage of businesses seeking finance whilst Illawarra statistical division reported the lowest percentage.
- Businesses in Murray and Far West statistical divisions reported the most difficulty obtaining finance, whilst businesses in Illawarra and Hunter statistical divisions reported the least difficulty.
- Upstream businesses reported the highest percentage of businesses seeking finance.

ACCESS FINANCE

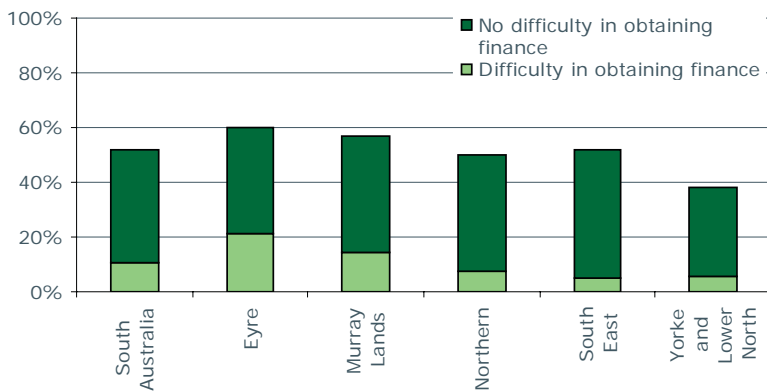
Queensland



In Queensland, 36% of agribusinesses sought finance in the last 12 months compared to 30% in the March Quarter.

- Seven percent of agribusinesses experienced difficulty obtaining finance and 29% reported no difficulty.
- South West, Central West and Darling Downs statistical divisions reported the highest percentage of businesses seeking finance whilst Moreton statistical division reported the lowest percentage.
- Businesses in Moreton and South West statistical divisions reported the most difficulty obtaining finance, whilst businesses in Central West, Fitzroy and Northern statistical divisions reported the least difficulty.
- Upstream businesses reported the highest percentage of businesses seeking finance and also the most difficulty in obtaining finance.

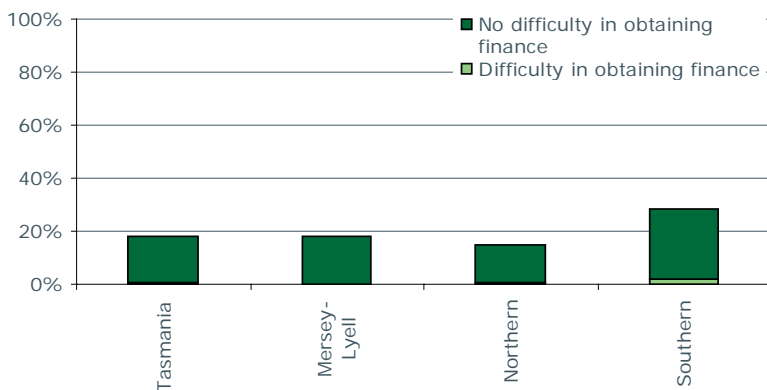
South Australia



In South Australia, 52% of agribusinesses sought finance in the last 12 months compared to 39% in the March Quarter.

- Ten percent of agribusinesses experienced difficulty obtaining finance and 42% reported no difficulty.
- Eyre and Murray Lands statistical divisions reported the highest percentage of businesses seeking finance whilst Yorke and Lower North statistical division reported the lowest percentage.
- Businesses in Eyre statistical division reported the most difficulty obtaining finance whilst businesses in South East and Yorke and Lower North statistical divisions reported the least difficulty.
- Upstream businesses reported the highest percentage of businesses seeking finance and also the most difficulty obtaining finance.

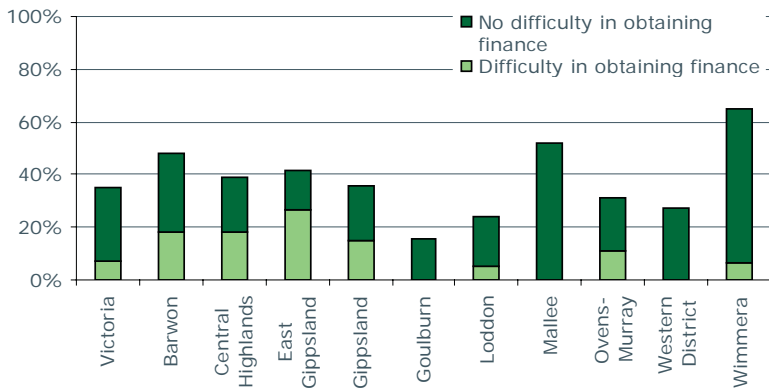
Tasmania



In Tasmania, 18% of agribusinesses sought finance in the last 12 months compared to 27% in the March Quarter.

- Less than 1% of agribusinesses experienced difficulty obtaining finance and 17% reported no difficulty.
- Southern statistical division reported the highest percentage of businesses seeking finance whilst Northern statistical division reported the lowest percentage.
- Businesses across Tasmania reported minimal difficulty obtaining finance.
- Producers reported the highest percentage of businesses seeking finance but the least difficulty obtaining finance. Downstream businesses reported the greatest difficulty obtaining finance.

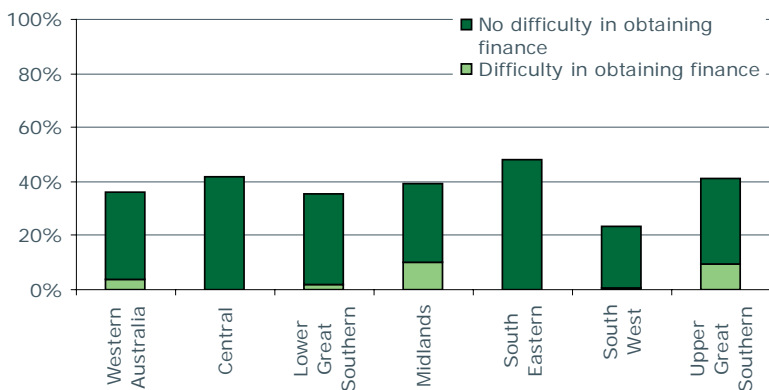
Victoria



In Victoria, 35% of agribusinesses sought finance in the last 12 months compared to 31% in the March Quarter.

- Seven percent of agribusinesses experienced difficulty obtaining finance and 28% reported no difficulty.
- Wimmera statistical division reported the highest percentage of businesses seeking finance whilst Goulburn statistical division reported the lowest percentage.
- Businesses in East Gippsland statistical division reported the most difficulty obtaining finance whilst businesses in Goulburn, Mallee and Western District statistical divisions reported the least difficulty.
- Upstream businesses reported the highest percentage of businesses seeking finance closely followed by producers. Producers reported the most difficulty

Western Australia



In Western Australia, 36% of agribusinesses sought finance in the last 12 months compared to 33% in the March Quarter.

- Four percent of agribusinesses experienced difficulty obtaining finance and 32% reported no difficulty.
- South Eastern statistical division reported the highest percentage of businesses seeking finance whilst South West statistical division reported the lowest percentage.
- Businesses in Midlands and Upper Great Southern statistical division reported the most difficulty obtaining finance whilst businesses in Central, South Eastern and South West statistical divisions reported the least difficulty.
- Producers reported the highest percentage of businesses seeking finance; however, upstream businesses reported the most difficulty obtaining finance.